

INNOVATING WITH NATURE

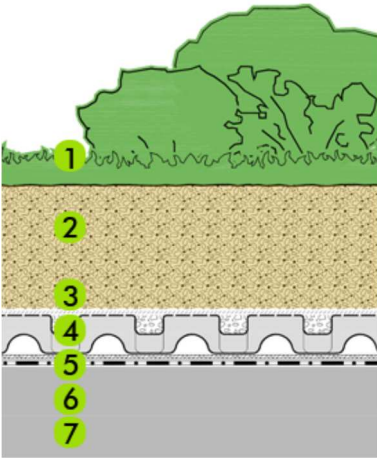
Roof Garden

Endless possibilities

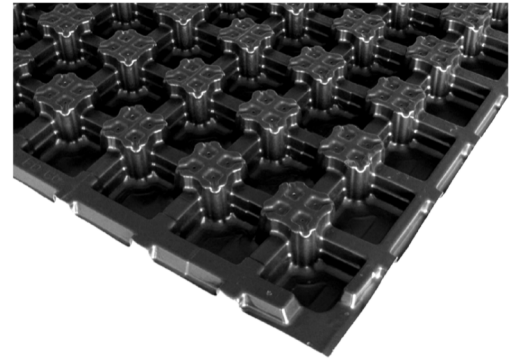
The "Roof Garden" green roof assembly is a multifunctional buildup with high water storage capacity. It provides for the widest possible range of plant material and landscape design of all the ZinCo assemblies. It is suitable for lawns, perennial plants and with a deeper growing medium for shrubs and trees. Integration with hard landscapes like walkways, terraces, driveways, ponds or play areas, makes any landscape design a possibility.

FLORADRAIN FD60-NEO

Besides growing vegetation the ZinCo Floradrain® FD 60 - Neo elements can also be used to create a substructure for foundations to support structures like planter walls and pergolas (without danger of penetrating the waterproofing membrane or interruption of the drainage layer (see page 3&4)). The "Roof Garden" option allows for the realization of a virtually unlimited range of design ideas



1. Plant Material: Trees, Shrubs, Perennials.
2. Growing Medium ZinCoblend-I
Depth: ≥ 250 mm
4. ZinCo Filter Sheet SF
4. ZinCo Floradrain® FD60-Neo
5. ZinCo Moisture Mat ISM50
6. ZinCo Root Barrier WSB100
7. Roof Construction with Waterproofing Membrane



Floradrain® FD 60 - Neo

Planting Options:



Trees, Shrubs & Perennials



Features:

- For landscaping and hard surfacing
- Regular maintenance required
- Full irrigation system recommended
- Planting: Nursery Stock
- Concrete form for walls

Slope: 2 - 5 degrees
Saturated weight: ≥ 375 kg/m² (77 psf)
Height: ≥ 310 mm (12")
Retention capacity: ≥ 143 L/m²



MULTIFUNCTIONAL

ZinCo Canada Inc.

P.O. Box 29 · Carlisle · L0R 1H0 · Ontario
Phone 1-905-690-1661 · Fax 1-905-689-0432
greenroof@zinco.ca · www.zinco.ca



INNOVATING WITH NATURE

Roof Garden

Endless possibilities



Growing medium for intensive Green Roofs ZinCoblend –SI are produced using recycled materials and minerals, enriched with high quality compost elements, resistant to flying sparks, frost-resistant, stable structure. Special engineered by ZinCo Canada and meets the FLL-standards for Planning, Execution and Upkeep of Green Roof sites.

Product	Art. Nr.	Size of Delivery
ZinCoblend-I - Bulk	6300	Per cubic meter
ZinCoblend-I - Big Bag	6310	Per cubic meter



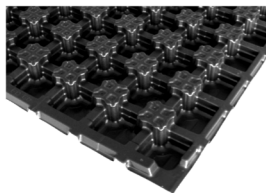
ZinCo filter sheet SF made of non-rotting thermally consolidated polypropylene. Used in combination with the Floradrain elements. Water flow rate: 155 l/(m2s) if there is a water column of 100 mm. Apparent opening size: $d_{90\%} = 110 \mu\text{m}$. Weight: 100 g/m2.

Product	Art. Nr.	Size of Delivery
Filter Sheet SF	2100	Approx. 2.00 m x 100.00 m roll
Filter Sheet SF	2101	Approx. 2.00 m x 10.00 m sheet
Filter Sheet SF	2102	Approx. 1.00 m x 100.00 m roll



ZinCo Mineral Fill made of light weight aggregate to fill the Floradrain FD60 elements.

Product	Art. Nr.	Size of Delivery
ZinCoblend-M - Bulk	6410	Per cubic meter
ZinCoblend-M - Big Bag	6420	Per cubic meter



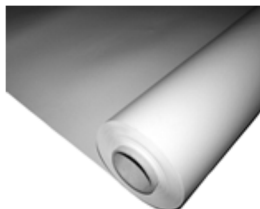
ZinCo drainage and water retaining element Floradrain @ FD60 for Intensive Roof Gardens. Made of ABS-, with water retaining troughs and openings for ventilation and evaporation as well as a multidirectional drainage channel system. Bitumen resistant - Max. compressive strength > 75 kN/m2 (filled up). Water storage capacity: 27 l/m2. Weight: approx. 2,3 kg/m2. Height: 60 mm.

Product	Art. Nr.	Size of Delivery
FD 60	3060	1.00 x 2.00 m



ZinCo moisture and protection Mat ISM50 made of recycled non-rotting polypropylene fibers for water- and nutrient retention as well as protection layer. Resistant to high mechanical pressure. Designed for intensive Roof Gardens, walkways and driveways. Thickness: 6 mm. Weight approx. 850 g/m2. Water retention capacity: 4 l/m2. Bitumen resistant - Biologically and chemically neutral.

Product	Art. Nr.	Size of Delivery
ISM50	2050	Approx. 2.00 m x 25.00 m roll



ZinCo root barrier WSB 100-PO made of flexible polyolefin (FPO), polyester scrim reinforced, resistant to bitumen, flexible at low temperatures, root resistance tested according to the German FLL method of 2002.- Hot Air Weldable - UV-stabilized - Cold-applied. Thickness: 1.10 mm. Weight: 1.13 kg/m2.

Product	Art. Nr.	Size of Delivery
WSB 100-PO	1084	Approx. 2.44 m x 30.50 m roll

ZinCo Canada Inc.

P.O. Box 29 · Carlisle · L0R 1H0 · Ontario
Phone 1-905-690-1661 · Fax 1-905-689-0432
greenroof@zinco.ca · www.zinco.ca



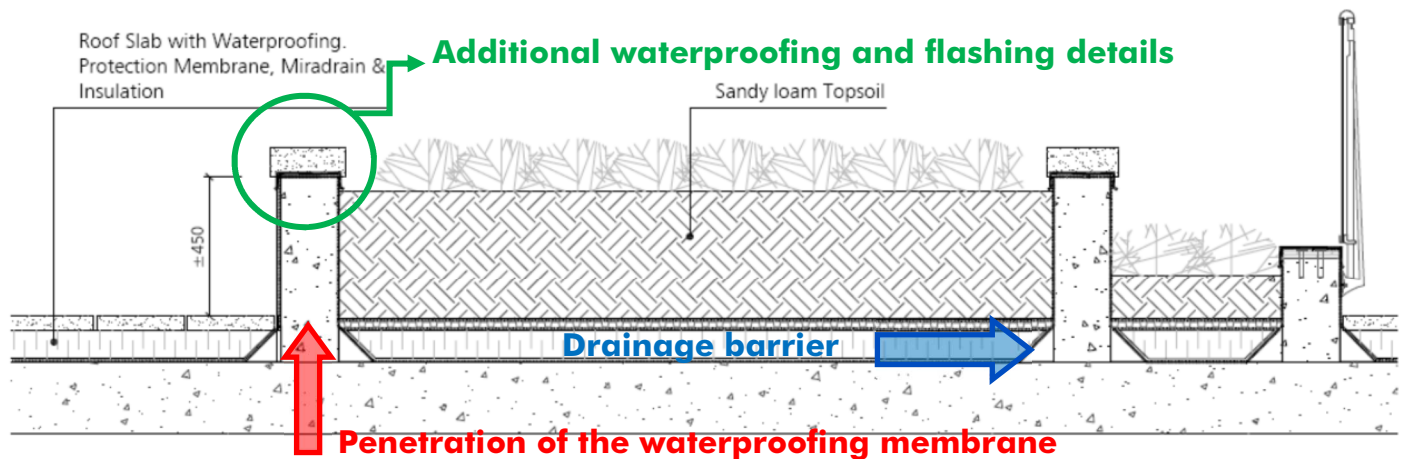
Top Priority for Roof Gardens..! Solutions without roof penetrations.

Foundations for Supporting Structures

Floradrain® FD 60 can be used as a formwork enabling foundations for various furnishings without penetration of the roof waterproofing membrane. The channel system on the underside of the elements ensures continuous drainage of excess water.

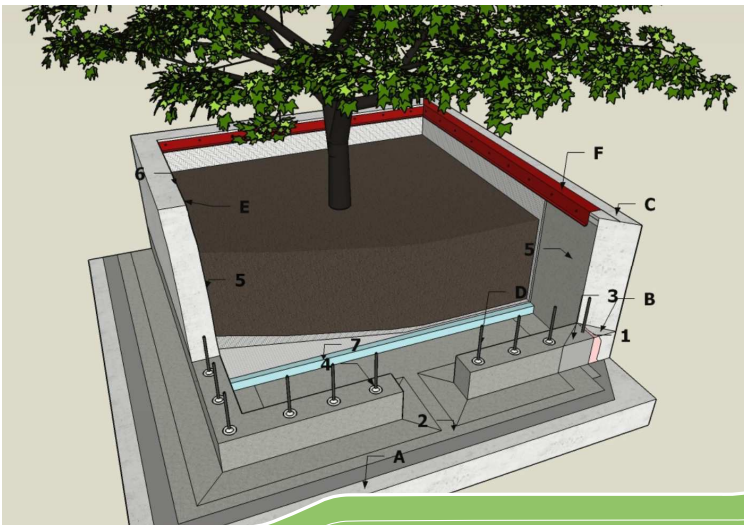
TRADITIONAL APPROACH

With the “traditional” approach structures like planter walls and pergolas are installed on the roof by pinning it to the roof deck using dowels. With this approach is penetrating the waterproofing membrane with a higher risk of leakage and requires additional waterproofing and flashing details. They also create barriers for proper drainage resulting in additional drains or scuppers.



Roof Planter
1:20

4
L3



ZINCO GREEN ROOF APPROACH
NEXT PAGE >>

Traditional Planter approach with membrane penetrations with dowels (D), scupper details (2) and additional vertical membrane (5) and flashings (F).

ZinCo Canada Inc.

P.O. Box 29 · Carlisle · L0R 1H0 · Ontario
Phone 1-905-690-1661 · Fax 1-905-689-0432
greenroof@zinco.ca · www.zinco.ca



INNOVATING WITH NATURE

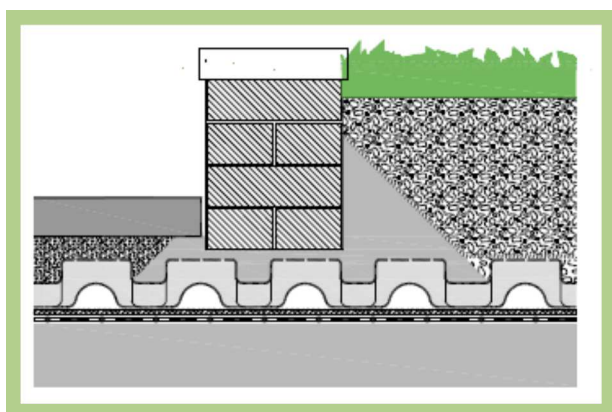
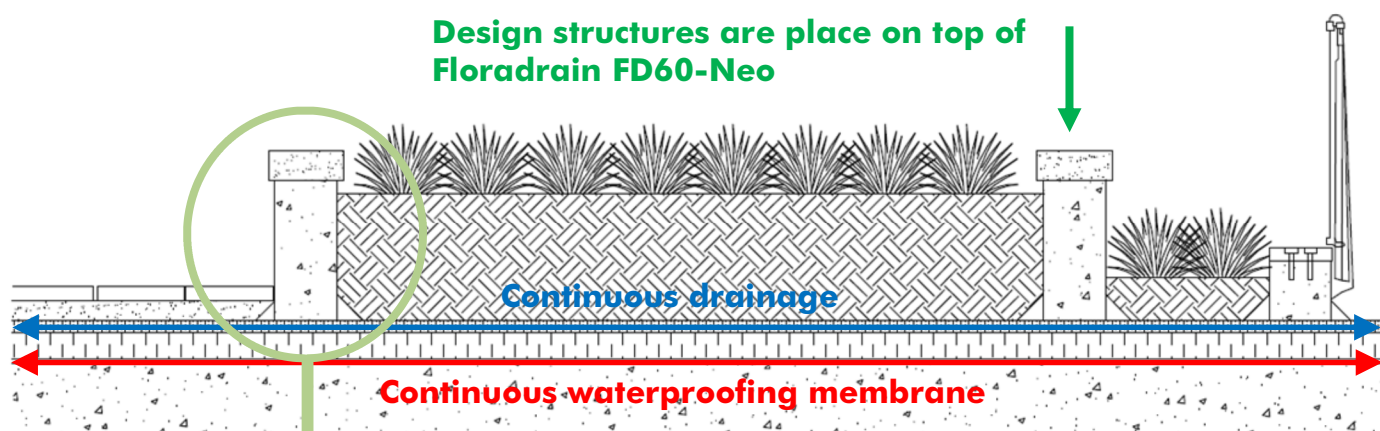
Roof Garden

Endless possibilities

Top Priority for Roof Gardens..! Solutions without roof penetrations.

GREEN ROOF APPROACH

With the "green roof" approach the structures like planter walls and pergolas are placed on top of the Floradrain FD60-Neo drainage element, eliminating any penetrations through the waterproofing membrane. This approach allows for a continuous waterproofing membrane and drainage layer underneath the required landscaping or hard surfacing, lowering the risk of leakage and drainage problems.



Detail of wall structure by green roof approach



ZinCo Canada Inc.

P.O. Box 29 · Carlisle · L0R 1H0 · Ontario
Phone 1-905-690-1661 · Fax 1-905-689-0432
greenroof@zinco.ca · www.zinco.ca

